



US009122422B2

(12) **United States Patent**  
**Johnston et al.**

(10) **Patent No.:** **US 9,122,422 B2**  
(45) **Date of Patent:** **Sep. 1, 2015**

(54) **REPRESENTING MODELS IN SYSTEMS  
DEVELOPMENT LIFECYCLE (SDLC) TOOLS  
USING A NETWORK OF INTERNET  
RESOURCES**

(75) Inventors: **Simon K. Johnston**, Siler City, NC  
(US); **Martin P. Nally**, Laguna Beach,  
CA (US)

(73) Assignee: **INTERNATIONAL BUSINESS  
MACHINES CORPORATION**,  
Armonk, NY (US)

7,181,731	B2 *	2/2007	Pace et al. ....	717/136
7,315,826	B1 *	1/2008	Guheen et al. ....	705/7
7,548,878	B2 *	6/2009	O'Halloran et al. ....	705/28
7,853,643	B1 *	12/2010	Martinez et al. ....	709/203
2001/0056386	A1 *	12/2001	O'Halloran et al. ....	705/28
2006/0059253	A1 *	3/2006	Goodman et al. ....	709/223
2006/0212408	A1 *	9/2006	Nuestro et al. ....	705/74
2007/0156842	A1 *	7/2007	Vermeulen et al. ....	709/217
2007/0192215	A1 *	8/2007	Taylor et al. ....	705/28
2008/0086495	A1 *	4/2008	Kiziltunc et al. ....	707/102
2008/0140760	A1 *	6/2008	Conner et al. ....	709/201
2008/0162482	A1 *	7/2008	Ahern et al. ....	707/9
2008/0201338	A1 *	8/2008	Castro et al. ....	707/100

\* cited by examiner

(\* ) Notice: Subject to any disclaimer, the term of this patent is extended or adjusted under 35 U.S.C. 154(b) by 1310 days.

(21) Appl. No.: **12/015,742**

(22) Filed: **Jan. 17, 2008**

(65) **Prior Publication Data**  
US 2009/0187573 A1 Jul. 23, 2009

(51) **Int. Cl.**  
**G06F 9/44** (2006.01)

(52) **U.S. Cl.**  
CPC ..... **G06F 8/10** (2013.01)

(58) **Field of Classification Search**  
USPC ..... 707/999.001, 600, 609, 687, 769  
See application file for complete search history.

(56) **References Cited**

U.S. PATENT DOCUMENTS

6,424,979	B1 *	7/2002	Livingston et al. ....	715/206
7,020,697	B1 *	3/2006	Goodman et al. ....	709/223

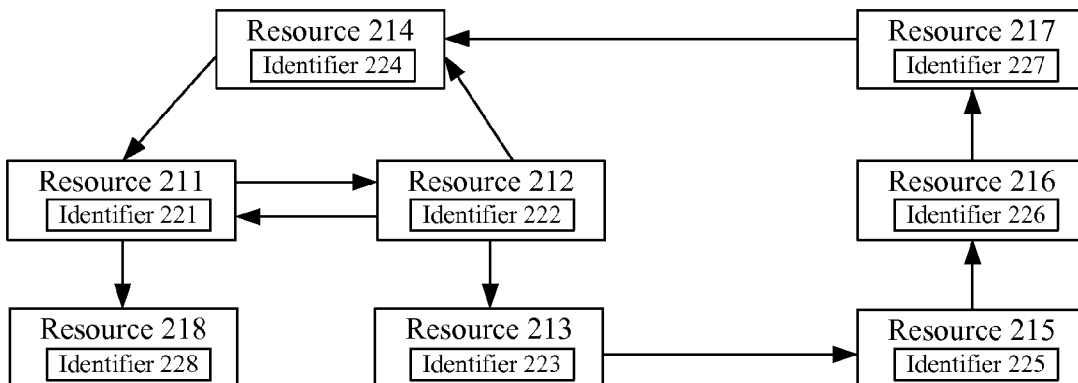
*Primary Examiner* — Mariela Reyes  
*Assistant Examiner* — Soheila Davanlou  
(74) *Attorney, Agent, or Firm* — Patents on Demand P.A.;  
Brian K. Buchheit; Scott M. Garrett

(57) **ABSTRACT**

In the present solution, as set of SDLC resources can be established, where each is separately addressable through a unique URL and is able to be managed through a simple set of operations. For example, a set of RESTful operations (GET, POST, PUT, and DELETE) can be used for the operations. Database management technologies can be leveraged for storing and indexing resources, but the underlying database schema for the solution can operate on a resource level, which results in the resources being stored as-is. Thus, storage (even when database based) of resources for the solution can be considered an Internet server exposing a space of URL addressable objects. Because the solution leverages Internet technologies and standards, it is scalable, standards based, extensible, and traceable.

**19 Claims, 7 Drawing Sheets**

**Approach 200**



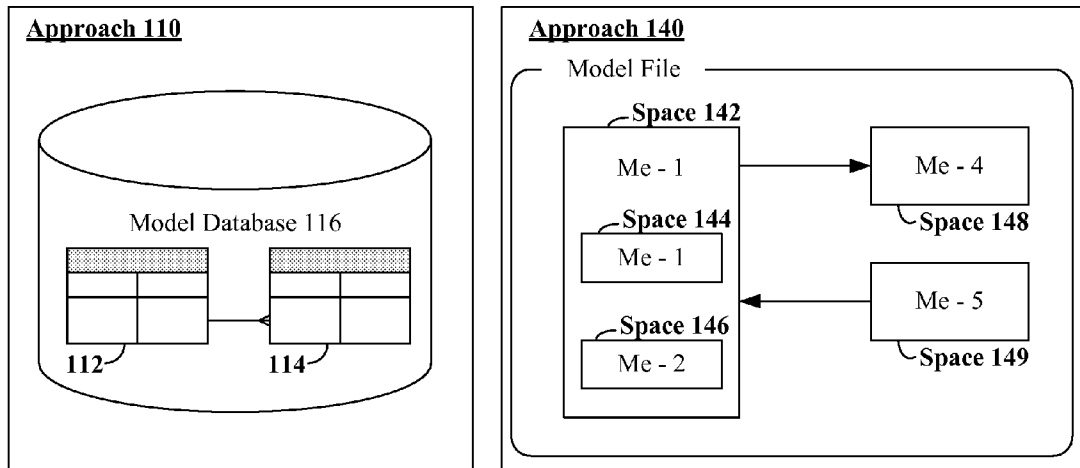


FIG. 1  
(Prior Art)

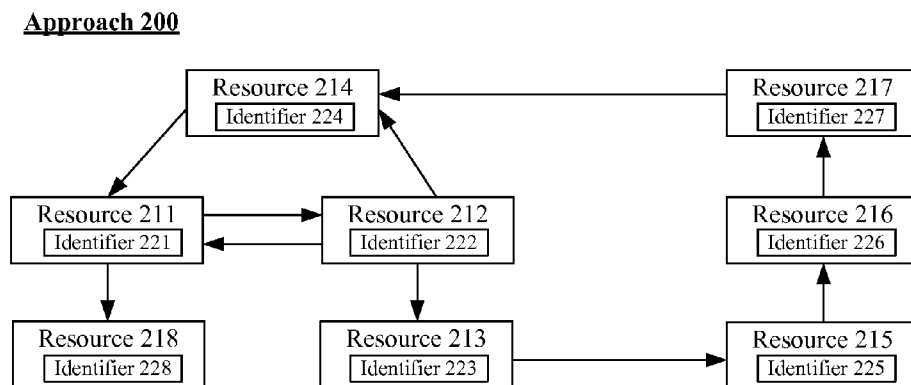
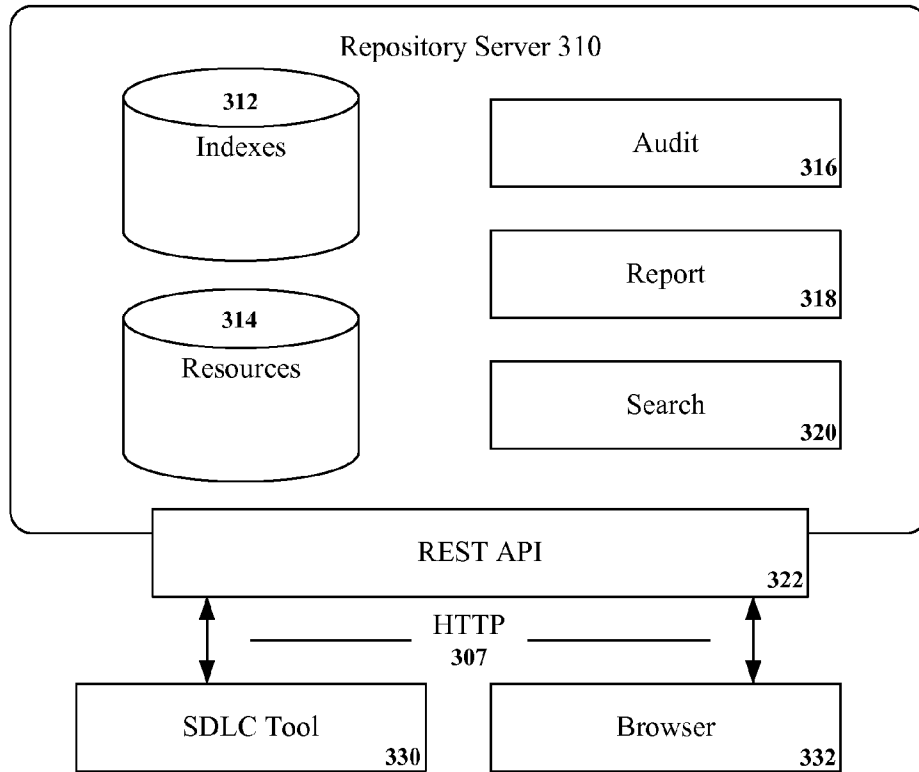


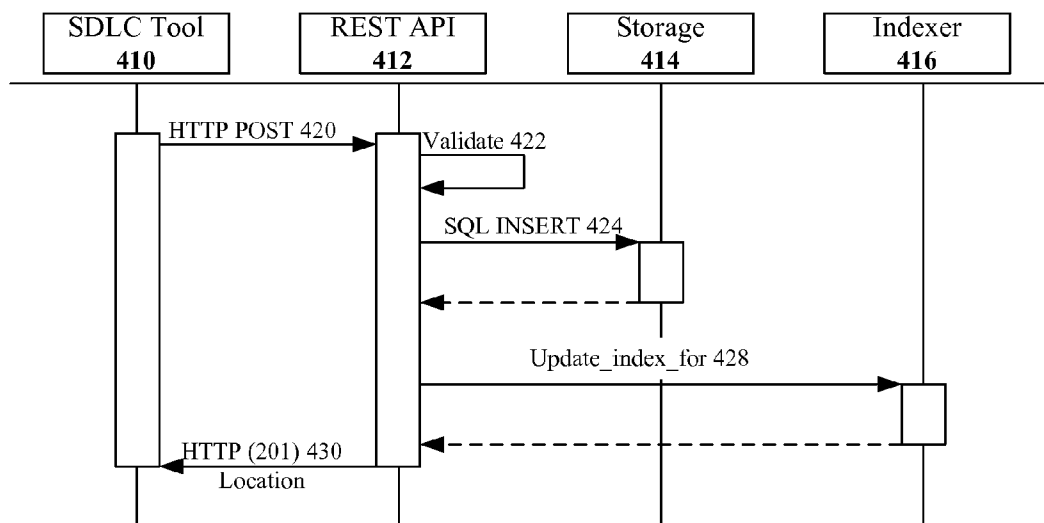
FIG. 2

**300**

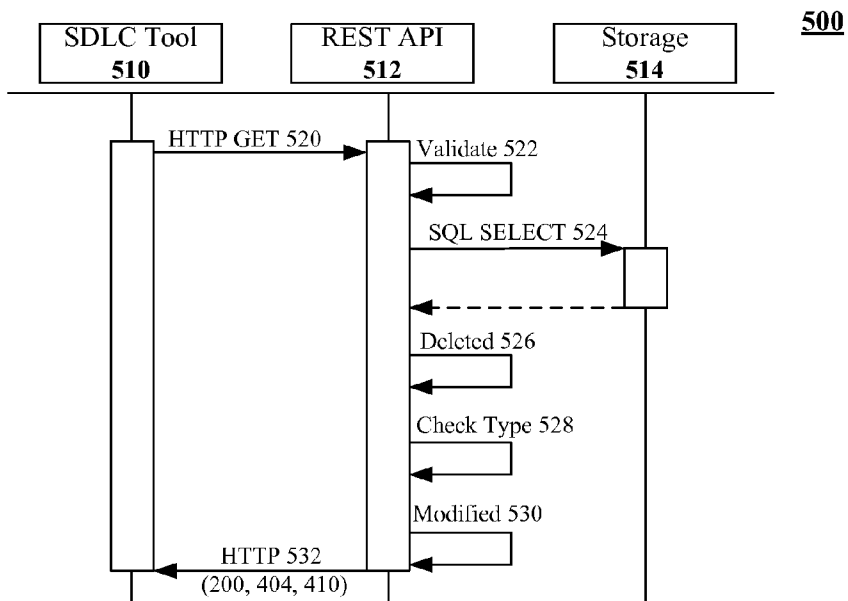


**FIG. 3**

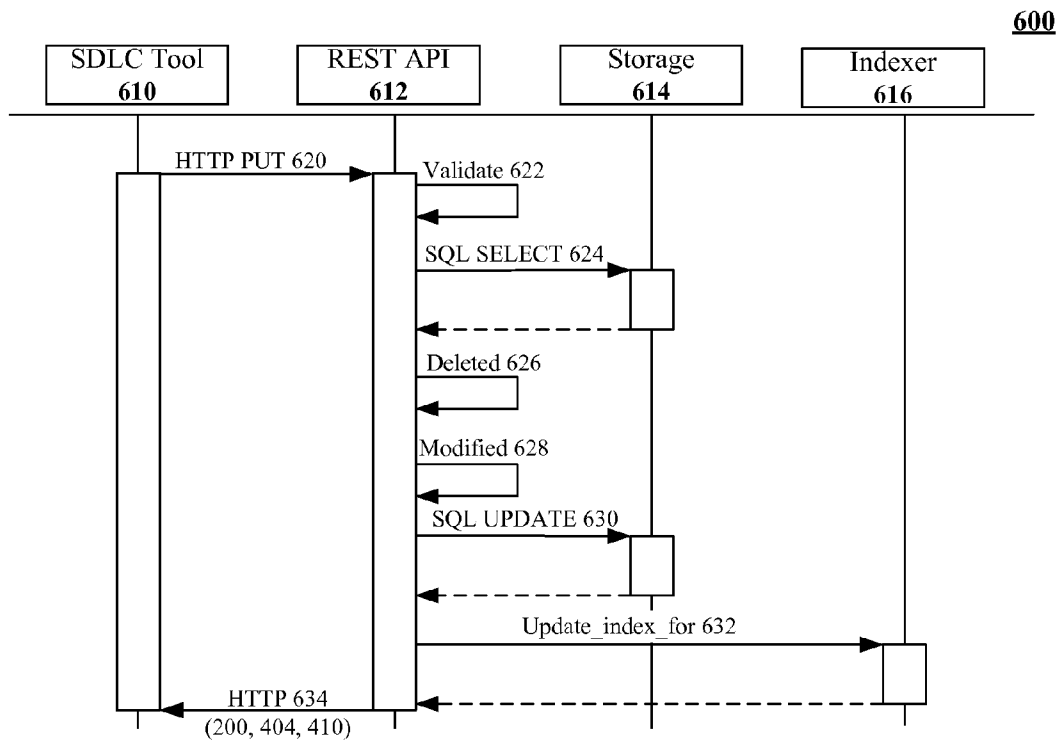
**400**



**FIG. 4**



**FIG. 5**



**FIG. 6**

700

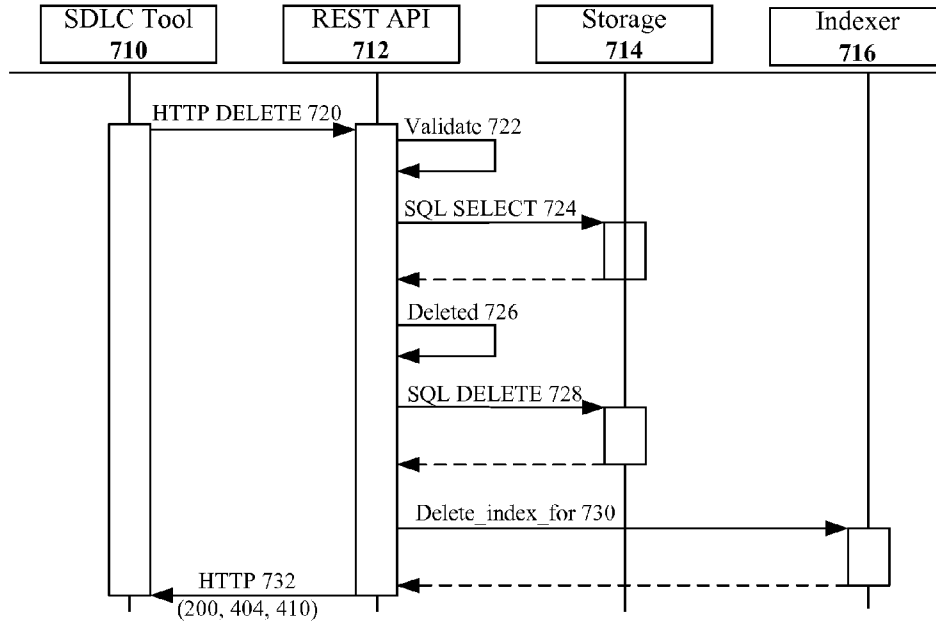


FIG. 7

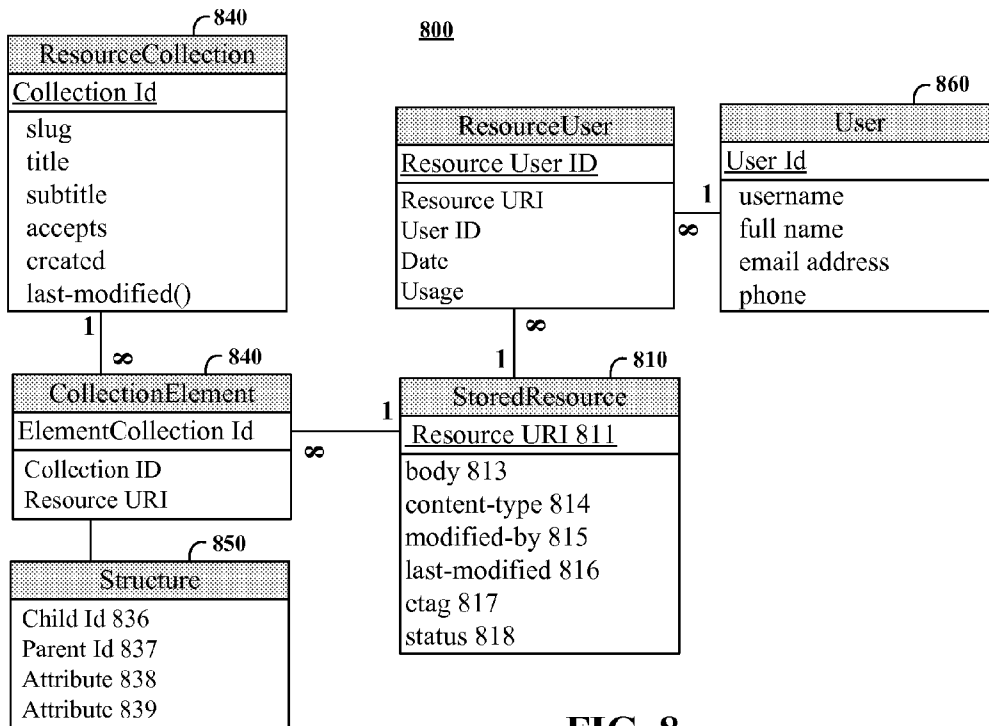


FIG. 8

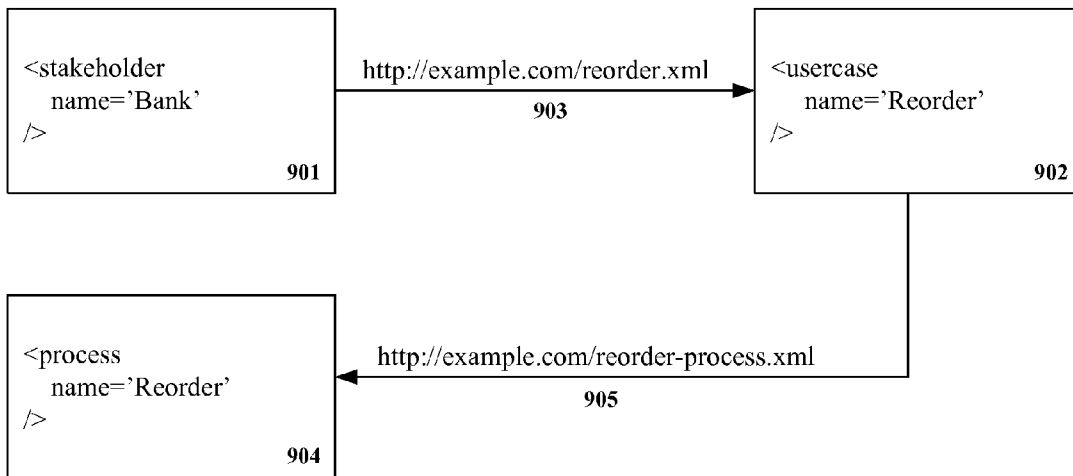


FIG. 9

```

<?xml version="1.0" encoding="UTF-8"?>
<!--xtools2_universal_type_manager-->
<?com.ibm.xtools.emf.core.signature <signature
id="com.ibm.xtools.uml.msl.model" version="7.0.0"><feature description=""
name="com.ibm.xtools.ruml.feature" url="" version="7.0.0"/></signature?>
<?com.ibm.xtools.emf.core.signature <signature
id="com.ibm.xtools.mmi.ui.signatures.diagram" version="7.0.0"><feature
description="" name="Rational Modeling Platform (com.ibm.xtools.rmp)" url=""
version="7.0.0"/></signature?>
<uml:Model xmi:version="2.0" xmlns:xmi="http://www.omg.org/XMI" xmlns:ecore="
http://www.eclipse.org/emf/2002/Ecore" xmlns:uml="
http://www.eclipse.org/uml2/2.0.0/UML" xmi:id="_F4EioN_nEdu4_bON_yMPIQ"
name="UseCaseExample">
<eAnnotations xmi:id="_F4Eiod_nEdu4_bON_yMPtQ" source="uml2.diagrams"/>
<packageImport xmi:id="_F4EipN_nEdu4_bON_yMPIQ">
<importPackage xmi:type="uml:Model"
href="pathmap://UML_LIBRARIES/UMLPrimitiveTypes.library.uml#_0"/>
</packageImport>
<packagedElement xmi:type="uml:UseCase" xmi:id="_H7WpAN_nEdu4_bON_yMPIQ"
name="CheckReorder">
<ownedBehavior xmi:type="uml:Activity" xmi:id="_QQg9IN_nEdu4_bON_yMPIQ"
name="CheckReorder">
<eAnnotations xmi:id="_QRGzAN_nEdu4_bON_yMPtQ" source="uml2.diagrams"/>
<eAnnotations xmi:id="_UWxn4N_nEdu4_bON_yMPtQ" source="
http://www.eclipse.org/uml2/2.0.0/UML">
<details xmi:id="_UWxn4d_nEdu4_bON_yMPIQ" key="process"/>
</eAnnotations>
</ownedBehavior>
</packagedElement>
<packagedElement xmi:type="uml:Actor" xmi:id="_LZhZAN_nEdu4_bON_yMPtQ"
name="Customer"/>
<packagedElement xmi:type="uml:Actor" xmi:id="_MSvgAN_nEdu4_bON_yMPtQ"
name="Bank"/>
<packagedElement xmi:type="uml:Actor" xmi:id="_NHpHsN_nEdu4_bON_yMPtQ"
name="Printer"/>
<profileApplication xmi:id="_F4Eipd_nEdu4_bON_yMPIQ">
<eAnnotations xmi:id="_F4Eipt_nEdu4_bON_yMPtQ" source="
http://www.eclipse.org/uml2/2.0.0/UML">
<references xmi:type="ecore:EPackage"
href="pathmap://UML_PROFILES/Standard.profile.uml#_yzU58YinEdqt/bnfB2L_5w"/>
</eAnnotations>
<appliedProfile href="pathmap://UML_PROFILES/Standard.profile.uml#_0"/>
</profileApplication>
<profileApplication xmi:id="_F4Eip9_nEdu4_bON_yMPIQ">
<eAnnotations xmi:id="_F4EiqN_nEdu4_bON_yMPtQ" source="
http://www.eclipse.org/uml2/2.0.0/UML">
<references xmi:type="ecore:EPackage"
href="pathmap://UML2_MSL_PROFILES/Default.epx#_IN8k8MmBEdqBcN1R6EvWUw?Default?Default?"/>
</eAnnotations>
<appliedProfile
href="pathmap://UML2_MSL_PROFILES/Default.epx#_a_S3wNWLEdiy4lqP8whjFA?Default?"/>
</profileApplication>
<profileApplication xmi:id="_F4Eiqd_nEdu4_bON_yMPIQ">
<eAnnotations xmi:id="_F4Eiqt_nEdu4_bON_yMPtQ" source="
http://www.eclipse.org/uml2/2.0.0/UML">
<references xmi:type="ecore:EPackage"
href="pathmap://UML2_MSL_PROFILES/Deployment.epx#_IrdAUMmBEdqBcN1R6EvWUw?Deployment/Deployment?"/>
</eAnnotations>
<appliedProfile
href="pathmap://UML2_MSL_PROFILES/Deployment.epx#_vjbuwOvHEdiDX5bji0VSA?Deployment?"/>
</profileApplication>
</uml:Model>

```

**Code 1010**

**FIG. 10A (Prior Art)**

**Code 1020**

```

<?xml version="1.0" encoding="UTF-8"?>
<usecase:UseCase xmlns:usecase="http://schema.ibm.com/rbp/2006/UseCase"
name="CheckReorder">
<link rel="process" type="" alt="Check Reorder Process"
href="CheckReorder.process"/>
<relationship>
<actor alt="Customer" href="Customer.stakeholder"/>
<actor alt="Bank" href="Bank.stakeholder"/>
</relationship>
<relationship>
<actor alt="Printer" href="Printer.stakeholder"/>
<actor alt="Bank" href="Bank.stakeholder"/>
</relationship>
</usecase:UseCase>

```

**FIG. 10B****Code 1030**

```

<?xml version="1.0" encoding="UTF-8"?>
<stakeholder:Stakeholder xmlns:stakeholder="
http://schema.ibm.com/rbp/2006/Stakeholder" name="Bank">
<description xmlns:dc="http://purl.org/dc/elements/1.1/">
<dc:creator>Simon Johnston</dc:creator>
<dc:title>The core stakeholder defining the bank itself .</dc:title>
<dc:description>This stakeholder represents the bank as a legal
organization.</dc:description>
<dc:date>2007-01-16</dc:date>
This is the description
</description>
<link rel="source" alt="Based Upon" href="
http://www.ibm.com/imodels/fss/bank.stakeholder"/>
<property name="core">True</property>
</stakeholder:Stakeholder>

```

**FIG. 10C**



**REPRESENTING MODELS IN SYSTEMS  
DEVELOPMENT LIFECYCLE (SDLC) TOOLS  
USING A NETWORK OF INTERNET  
RESOURCES**

BACKGROUND

1. Field of the Invention

The present invention relates to the field of software development tooling and, more particularly, to representing models in SDLC tools using a network of Internet resources.

2. Description of the Related Art

A Systems Development Life Cycle (SDLC) is a collection of process, methods, and tools used by various roles to develop an information system, including requirements, validation, training, and user ownership through investigation, analysis, design, implementation, and maintenance. Required artifacts in the SDLC can be modeled using a variety of software modeling tools and standards, such as the Systems Modeling Language (SysML), Integrated Definition (IDEF), Entity Relationship Diagrams (E/R), Unified Modeling Language (UML), processing modeling tools, and the like. Each of these tools manage a set of associated artifacts, where an artifact is a software construct that represents any logical or physical asset created or maintained through a SDLC. For descriptive purposes, a model is a type of artifact with a structured representation used by modeling tools.

SDLC tooling can be analyzed in terms of the following general requirements: scalability, interoperability, extensible model representations, and traceability within and between models. Scalability refers to an ability of a solution to support hundreds of thousands, if not millions, or artifacts in its repository without unreasonable measures being taken. Interoperability, which can be realized in a SDLC context through open APIs, ensures that users are not locked into a specific tooling provided by a repository vendor, which can increase purchase and maintenance costs, can be limiting in terms of utilization of emerging technologies, and can result in other problems typical of a lock-in situation. An extensible model representation describes models in a manner that permits them to carry and utilize additional information, such as information contributed by an additional tool or end-user. Extensible tools should have an ability to validate added content. Traceability within and between models refers to an ability of an approach to satisfy user needs to express and understand relationships between models and other SDLC artifacts. Relationships can include peer relationships (e.g., a customer having multiple accounts for which particular SDLC artifacts relate), temporal relationships (e.g., an artifact was created from another artifact), and trace relationships (e.g., showing which SDLC artifacts are associated with which sets of requirements).

Conventional SDLC modeling tools manage artifacts using either a database storage approach or a file system and version control system approach, each of which has significant shortcomings. FIG. 1 (Prior Art) illustrates a conventional database storage approach **110** and a conventional model file approach **140** for storing and managing SDLC artifacts.

The database storage approach **110** provides tools that operate in a client-server configuration, where information is stored in tables **112**, **114** of a server database **116**. An underlying schema for artifacts is fixed in advance and tools read/write to specific tables in a shared database **116**. Since approach **110** relies upon a database foundation, it is as scalable as the underlying database **116** upon which it is constructed. Similarly, APIs used for approach **110** depend upon those of an underlying database. Extensibility and traceabil-

ity of approach **110** can require a restructuring of underlying database structures, which can be expensive and time consuming. Additionally, many database implementations include proprietary codes and structural constraints, which can make user desired modifications difficult. Further, user interfaces built on top of a database can require changes as a database structure changes.

A file and version control system (VCS) approach **140** can create artifacts on the file systems of the user's machines, which results in artifacts being stored in a set of storage spaces **142-149**. These storage spaces **142-149** can be "nested" by designating a set of spaces **142**, usually geographically grouped at a location having a primary function related to the type of artifact being stored. Within any set of spaces **142**, numerous sub-spaces **144**, **146** can exist. Searching for a given artifact can require searching through all the storage spaces **142-149**. This searching can be "optimized" by grouping different types of artifacts so that only a subset of the storage spaces need be searched for a given type of artifact, such as searching space **142**. This "optimization" assumes that a user's search criteria matches criteria through which the artifacts are grouped. Sometimes, a complete index of files in spaces **142-149** is maintained by a set of one or more servers. Approach **140** generally scales poorly and performance degrades quickly as an overall artifact quantity increases. Approach **140** often uses proprietary code and APIs, with variable extensibility characteristics depending upon coding practices used to implement an instance of approach **140**. Most conventional solutions following approach **140** have limited to no traceability within and between models.

SUMMARY OF THE INVENTION

The present invention discloses a solution for designating software resources as URL addressable objects. Software resources can include Systems Development Life Cycle (SDLC) artifacts. Relationships and linkages among the resources can be established using the URLs. Each individual resource can be defined using standard Web based languages, such as using XML or any other HTML based/derived language. Additionally, the resources can be stored in a manner that maintains their internal structure. That is, when stored in a database, each resource is able to be stored as is, without breaking down the internal structure into multiple tables or into a database schema where an atomic unit is less than the resource level. Servers for managing the various resources can be established, which accept Representational State Transfer (REST) based commands. Thus, operations against resources can occur in a stateless fashion, using a set of simple operations (e.g., GET, PUT, POST, and DELETE). The disclosed solution is able to leverage tools and technologies used for storing, searching, and manipulating Web documents, since each SDLC resource is considered a URL addressable object. Optionally, database technologies can be leveraged in the solution, which is able to maintain a separate set of indexes for managed resources, to optimize search times and performance.

The present invention can be implemented in accordance with numerous aspects consistent with the materials presented herein. One aspect of the present invention can include a repository server for managing a network of individual resources, each of which is associated with an information technology (IT) asset. The server can include a data store and a REST Application Program Interface (API). The data store can store a set of SDLC resources, each resource having a unique addressable Uniform Resource Identifier (URI) asso-

ciated with it. Each of the SDLC resource can represent a physical or logical IT asset. Each resource can utilize a standardized markup language to specify asset details. The network of individual resources can be linked to other resources using messages conforming to at least one standard network messaging protocol. The REST API can be configured for submitting resource related requests to the data store. The REST API can receive and respond to an HTTP GET command, an HTTP PUT command, an HTTP POST command, and an HTTP DELETE command.

Another aspect of the present invention can include a software object representing a information technology asset from which models are able to be built. The software object can represent a physical or logical IT asset. The software object can also include an addressable URI and at least one additional attribute. The URI is uniquely associated with the asset. The attribute is used to specify a value for the represented asset. The software object is able to be linked to other software objects having unique URI addresses using HTTP based links.

Still another aspect of the present invention can include a method for specifying IT assets that includes storing and managing a set of SDLC artifacts as a network of individual resources. Each individual resource can have a unique and addressable URI associated with it. Each of the SDLC artifacts can represent a physical or logical information technology asset. Each resource can utilizes a standardized markup language to specify asset details, wherein said network of individual resources are linked to other resources using messages conforming to standard network messaging protocols.

It should be noted that various aspects of the invention can be implemented as a program for controlling computing equipment to implement the functions described herein, or as a program for enabling computing equipment to perform processes corresponding to the steps disclosed herein. This program may be provided by storing the program in a magnetic disk, an optical disk, a semiconductor memory or any other recording medium. The program can also be provided as a digitally encoded signal conveyed via a carrier wave. The described program can be a single program or can be implemented as multiple subprograms, each of which interact within a single computing device or interact in a distributed fashion across a network space.

#### BRIEF DESCRIPTION OF THE DRAWINGS

There are shown in the drawings, embodiments which are presently preferred, it being understood, however, that the invention is not limited to the precise arrangements and instrumentalities shown.

FIG. 1 (Prior Art) illustrates a conventional database storage approach and a conventional model file approach for storing and managing Systems Development Life Cycle (SDLC) artifacts.

FIG. 2 is a schematic diagram illustrating using an approach for storing and managing SDLC artifacts as a network of individual resources in accordance with an embodiment of the inventive arrangements disclosed herein.

FIG. 3 is a schematic diagram of a system for managing/using a network of SDLC resource in accordance with an embodiment of the inventive arrangements disclosed herein.

FIG. 4 is a flow diagram showing a method for creating a new SDLM resource in accordance with an embodiment of the inventive arrangements disclosed herein.

FIG. 5 is a flow diagram showing a method for retrieving an existing SDLM resource in accordance with an embodiment of the inventive arrangements disclosed herein.

FIG. 6 is a flow diagram showing a method for updating an existing SDLM resource in accordance with an embodiment of the inventive arrangements disclosed herein.

FIG. 7 is a flow diagram showing a method for deleting an existing SDLM resource in accordance with an embodiment of the inventive arrangements disclosed herein.

FIG. 8 is a diagram showing a database storage schema for storing SDLM resources as well as ancillary data, such as user records and collections of resources.

FIG. 9 represents a use case with a number of related actor elements in accordance with an embodiment of the inventive arrangements disclosed herein.

FIG. 10A (Prior Art) shows a code example for representation of the use case of FIG. 9 using OMG's XML Metadata Interchange (XMI).

FIG. 10B shows a code example for representing a use case of FIG. 9 utilizing a network of resources approach.

FIG. 10C shows a code example for representing a resource of FIG. 9 utilizing a network of resources approach.

#### DETAILED DESCRIPTION OF THE INVENTION

FIG. 2 is a schematic diagram illustrating using an approach **200** for storing and managing Systems Development Life Cycle (SDLC) artifacts as a network of individual resources in accordance with an embodiment of the inventive arrangements disclosed herein. As defined herein, a resource **211-218** can be a SDLC artifact that is managed according to Internet architecture principles. A SDLC artifact can be a software construct that represents any logical or physical asset created or maintain through a SDLC.

Each resource **211-218** can include a unique identifier **221-228**, which can be an addressable Uniform Resource Identifier (URI). Each resource **211-218** can use standardized languages, such as extensible Markup Language (XML), a Hypertext Markup Language (HTML), or any other language markup based or otherwise, to specify asset details. Resources **211-218** can be linked **231-239** to other resources **211-218** using standard messages conforming to standard network messaging protocols. A set of resources **211-218** can be stored and managed within an open Internet repository of resources based upon Hypertext Transfer Protocol (HTTP) and Representational State Transfer (REST) principles.

In terms of scalability, approach **200** leverages the scalability model employed by the Internet today, which is almost endlessly scaleable. Each resource **211-218** is separately addressable and is managed through a simple set of operations. In one embodiment, database management technologies can be leveraged for storing and indexing resources **211-218**. Unlike conventional database implementations, however, a database schema for the resources **211-218** is intended to store the resources **211-218** as-is rather than having specific tables established for different resource types and resource attributes. Thus, storage (even when database based) of resources **211-218** for approach **200** can be considered an Internet server exposing a space of URL addressable objects. Links between resources **211-218** are only of concern to the client navigating a network of resources **211-218**.

In terms of using open Application Program Interfaces (APIs), approach **200** uses a REST style of HTTP usage, which is a foundational concept of the Internet architecture. Interactions with resources **211-218** can occur statelessly through a set of basic primitive commands, such as HTTP GET, HTTP POST, HTTP GET, and HTTP DELETE. REST commands able to be handled by many Web browsers. That is, most Web browsers can retrieve/review resources **211-218** directly without a need for specialized tooling. Additionally,

any REST based tool can used for retrieving, adding, updating, and deleting resources **211-218**, which makes API considerations for approach **200** a non-issue.

Unlike conventional approaches, which rarely permit SDLC artifacts to be extended with additional content, in approach **200**, resource formats become part of the contract between servers and client tools. In other words, formats for SDLC can be standardized in any manner. A base standard can be established, by a standardizing organization such as the World Wide Web Consortium (W3C), for example, which can be extended at will. In one embodiment, resource **211-218** representations can be defined using XML and can specifically require namespace-aware processors such that extensions to resource formats can be defined in different XML namespaces and can therefore be mixed in to resources **211-218** in ways that do not affect the client processing of the resources **211-218**.

In terms of traceability, the resources **211-218** are each treated as separate objects able to be linked to using URLs. This approach works by providing a very simple and extensible (REST messages) mechanism for both intra and inter resource links. In one embodiment, traceability relationships with resources **211-218** can be indexed so as to be able to produce resources to reverse queries. Traceability operations can be handled in the same manner as other linkages to the resources **211-218**, even when traceability (or other) operations represent actions not known a priori by a resource designer. New functionality can even be added post deployment, so long as the standard conventions for URL referencing of the resources **211-218** are utilized.

It should be appreciated that the approach **200** is vastly different from conventional systems that either don't implement traceability capabilities or that implement them with separate and distinct tools. Use of separate tool can result in fragmentation of information and fragile links. Other conventional approaches attempt to define a single model that describes a set of concepts in a domain and the set of relationships among them. These approaches suffer from a "closed world view" where the model becomes hard to extend and is often too rigid to accommodate new concepts and operations.

FIG. 3 is a schematic diagram of a system **300** for managing/using a network of SDLC resource in accordance with an embodiment of the inventive arrangements disclosed herein. The resources **314** of system **300** can be structured and linked in a manner shown by approach **200**. More specifically, system **300** describes one arrangement for managing a network of SDLC resources in a shared repository, which provides open and extensible access to the resources. System **300** also leverages open protocols and existing Internet practices to provide a scalable repository. It should be appreciated that system **300** represents one contemplated arrangement for managing/using SDLC resources and that the invention is not to be limited in this regard.

As shown in system **300**, a repository server **300** can maintain a database of resources **314** that are currently being managed by the server **310**. The resources **314** can be stored in a data store/database local to server **310**, or can be stored in a more distributed fashion, where server **310** maintains a set of URLs for the "stored" resources, which are used to reference the resources regardless of their actual storage location. Server **310** can also maintain a set of indexes **312** for the resources **314**, which permits queries to be executed against the resources **314**. In one embodiment, the indexes **312** can be stored in a relational database so that standard queries can be efficiently executed against the indexes **312**, such as SQL queries and commands.

The server **310** can include an auditing component **316**, a reporting component **318**, and/or a search component **320**, each of which can utilize information stored in repository **312** and/or **314**. The auditing component **316** can provide traceability capabilities for the resources, can show a change and usage history for the resource, and the like. Version control functions, such as check-in and check-out functions can also be performed/handled by auditing component **316**. The reporting component **318** can permit any type of report involving the resources to be generated. Reports of component **318** can include SQL based reports, standard system provided reports, and user customized reports. Dynamic report generation and/or an ability to save and re-use previously created reports can be included in component **318**. The search component **320** can permit cross-repository text searches and/or intra repository searches. Database and Web searching technologies can both be implemented within search component **320** to provide robust, extensible, and responsive search capabilities.

All the capabilities of server **310** can be accessed through REST API **322**. That is, HTTP requests **307** (e.g., HTTP GET, HTTP POST, HTTP PUT, and HTTP DELETE) can be used to communicate with server **310**. Server **310** communications can originate from a SDLC specific tool **330**, from more generic tools, from any REST interface, and even from a standard (or enhanced) browser **332**.

The server **310** can be any computing device or set of computing devices able to manage resources as described. In one embodiment, the server **310** can represent a physical server having installed software that executes locally. In another embodiment, the server **310** can also represent a virtual server or a distributed server, which is physically implemented by one or more hardware devices that may be distributed from each other. In still other embodiments, server **310** can further be implemented as a cluster of servers, or as a resilient set of servers linked in an autonomic manner. Use of REST standards and Internet protocols makes it easy implement functions of server **310** is a highly configurable and flexible manner.

The indexes **312** and resources **314** can each be data stores configured to maintain digitally encoded information. Each of the data stores can be physically implemented within any type of hardware including, but not limited to, a magnetic disk, an optical disk, a semiconductor memory, a digitally encoded plastic memory, a holographic memory, or any other recording medium. Each data stores can be a stand-alone storage unit as well as a storage unit formed from a plurality of physical devices. Additionally, information can be stored within each of the data stores in a variety of manners. For example, information can be stored within a database structure or can be stored within one or more files of a file storage system, where each file may or may not be indexed for information searching purposes. Further, each data store can utilize one or more encryption mechanisms to protect stored information from unauthorized access.

FIG. 4-7 illustrate message flows for implementing basic REST commands for SDLM resources. These basic commands can be to insert (HTTP POST), retrieve (HTTP GET), update (HTTP PUT), and delete (HTTP DELETE) SDLM resources that are stored as a network of resources in an Internet space. In one embodiment, the REST commands of FIG. 4-7 can be issued to a repository server (e.g., repository server **310**) through a REST API (e.g., API **322**). The repository server can include a resource storage element (e.g., resources data store **314** and search **320**) and an indexer (e.g., indexes **312** and search **320**). Although the examples of FIG. 4-7 show commands issuing from a SDLC tool (e.g., tool **330**)

to a REST API of a repository server, commands from other sources (e.g., browser 332, for example) are contemplated. It should be appreciated that while FIG. 4-7 shows a sample implementation, derivatives are contemplated and that a scope of the invention is not to be limited in this regard.

FIG. 4 is a flow diagram 400 showing a method for creating a new SDLM resource in accordance with an embodiment of the inventive arrangements disclosed herein. The diagram 400 can be applicable in context of any computing system using networked SDLM resources (as shown in diagram 200), such as system 300. Diagram 400 shows a SDLC tool 410, a REST API 412, a storage 414, and an indexer 416, which interact during the resource creation process.

In diagram 400, an HTTP POST command 420 can be sent from tool 410 to REST API 412, where the command 420 creates a new resource. The new resource can be validated 422, then inserted into storage 414 using a database insert command 424. A command 428 to update indexes associated with the new resource can be conveyed to an indexer 416. The indexer 416 can be a full text search engine, such as APACHE LUCENE. When the new resource is successfully created, a created response 430 (e.g., HTTP 201 code) can be returned to the SDLC tool 410. Otherwise, an appropriate error code can be returned to tool 410.

FIG. 5 is a flow diagram 500 showing a method for retrieving an existing SDLM resource in accordance with an embodiment of the inventive arrangements disclosed herein. The diagram 500 can be applicable in context of any computing system using networked SDLM resources (i.e., as shown in diagram 200), such as system 300. Diagram 500 shows a SDLC tool 510, a REST API 512, and a storage 514.

In diagram 500, a HTTP GET command 520 can be sent from tool 510 to REST API 512, where the command 520 attempts to retrieve an existing resource. The request can be first validated 522. If valid, a retrieval request 524 can be sent to storage 514 for the resource. The request can, for example, be a database select query. A series of conditional actions can then occur based upon requests of the resource request to storage 514. If the requested resource is not found in storage 514, then a Not Found message 532 (e.g., HTTP 404 code) can be conveyed from REST API 512 to SDLC tool 510. The requested resource can be found in storage 514, but marked as deleted 526, in which case a Gone message 532 (e.g., HTTP 410 code) can be returned to tool 510. The requested resource can be of an incompatible type 528 compared to the stored resource format (determined based upon the Accepts request header, for example), in which case a Forbidden response 532 (e.g., HTTP 403 code) can be sent to tool 510. If the discovered resource has not been changed since the client last attempted to access it (determined using HTTP entity tags and conditional requests, for example) the server can return a Not Modified response 532 (e.g., HTTP 304 code) to tool 510. If everything succeed, a Success message 532 (e.g., HTTP 200 code) can be conveyed.

FIG. 6 is a flow diagram 600 showing a method for updating an existing SDLM resource in accordance with an embodiment of the inventive arrangements disclosed herein. The diagram 600 can be applicable in context of any computing system using networked SDLM resources (i.e., as shown in diagram 200), such as system 300. Diagram 600 shows an SDLC tool 610, a REST API 612, a storage 614, and an indexer 616.

In diagram 600, a HTTP PUT command 620 can be sent from tool 610 to REST API 612, where the command is for updating an existing resource. The request can be validated 622, which is followed by a database query 624. The query 624 can be, for example, a SQL select command 624 from

API 612 to storage 614 for finding the existing resource. If the requested resource is not found in storage 614, then a Not Found message 634 (e.g., HTTP 404 code) can be conveyed from REST API 612 to SDLC tool 610. The requested resource can be found in storage 614, but marked as deleted 626, in which case a Gone message 634 (e.g., HTTP 410 code) can be returned to tool 610. The requested resource can be of an incompatible type 628 compared to the stored resource format (determined based upon the Accepts request header, for example), in which case a Forbidden response 634 (e.g., HTTP 403 code) can be sent to tool 610. If the discovered resource has not been changed since the client last attempted to access it (determined using HTTP entity tags and conditional requests, for example) the server can return a Not Modified response 634 (e.g., HTTP 304 code) to tool 610. If everything succeeds, an update 630 SQL action can be performed. Indexes for the resource can then be updated via command 632, after which a Success indicator 634 can be sent to the tool 610.

FIG. 7 is a flow diagram 700 showing a method for deleting an existing SDLM resource in accordance with an embodiment of the inventive arrangements disclosed herein. The diagram 700 can be applicable in context of any computing system using networked SDLM resources (i.e., as shown in diagram 200), such as system 300. Diagram 700 shows an SDLC tool 710, a REST API 712, a storage 714, and an indexer 716.

In diagram 700, a HTTP DELETE command 720 can be sent from tool 710 to API 712 to remove an existing resource from storage, the request can be validated 722, and the resource to be deleted can be searched 724 for in storage 714. Various checks (i.e., Not Found; Gone 726) can be performed to ensure the resource exists in storage 714. If so, a SQL delete 728 command can be issued to storage 714 to delete the resource and indexes 730 can be updated. A suitable response 732 depending upon whether the delete operation was successful can be sent to the SDLC tool 710.

FIG. 8 is a diagram 800 showing a database storage schema for storing SDLM resources as well as ancillary data, such as user records and collections of resources. Diagram 800 can represent one contemplated database structure for resources data store 312 and/or for storage 414, 514, 614, 714. Storage structures other than what is shown in diagram 800 are contemplated and the invention is not to be limited in this regard.

The diagram 800 is expressed in approximately third normal form, as is standard for database schema representations. As shown, a many-to-many relationship can exist between resource collection table 840 and resource table 810, which are joined by resource collection associative table 830. This indicates that a resource can be part of many collections, and that each collection can include many resources. A many-to-many relationship also exists between the resources 810 and users 860, linked through resource user table 850. This indicates that resources can be accessed/updated/created/deleted by many different users and that users can manipulate many different resources.

As shown, each resource of table 810 can be uniquely identified by a URL 811, which serves as a primary key for table 810. Other attributes of table 810 can include a body 813, a content type 814, a modification id 185, a last modified value 816, an etag 817, a status 818, and the like. A set of table 810 attributes 814-818 can be tailored/optimized for the HTTP protocol, which allows for efficient protocol operations while provisioning for protocol specific capabilities, such as write-contention detection and deletion reporting. The body 813 of a resource is a stored software object not having a specific shape, type, or structure. Thus, structured

XML files, word processor documents, image files, and the like can be equally well stored and managed by this schema.

In one contemplated derivation of schema **800**, different types of resource body objects can be stored in different tables along with content type specific attributes, in which case the body **814** and content type **815** can together serve as a foreign key relating table **810** to these remote tables. This emphasizes that the schema of diagram **800** can be easily adapted by skilled database designers to handle an arbitrary level of complexity.

Resources of table **810** can be structured to create models, which can each be a collection definable by table **830** entries. Resource structure within a model can be indicated by attribute values of the resource collection associative table **830**. For example, a structure level **832** can indicate a resource's position in a hierarchical structure. When resources are able to be structured in a parent/child relationship, structural table **835** can be used to denote these relationships, where each child **836** and parent **837** element is a foreign key to an entry of the table **830**. Different structural attributes **838**, **839** can be included in structure table **835** to indicate structural characteristics important to the associated model. The schema of diagram **800** can be modified to include any number of structure defining tables and attributes. Thus, derivative schemas can be constructed to characterize any desired software model formed from structuring a set of resources.

FIG. **9** represents a use case with a number of related actor elements in accordance with an embodiment of the inventive arrangements disclosed herein. The elements **901**, **902**, **904** can represent a stakeholder, a use case, and a process respectively. Communications among elements **901**, **902**, and **904** can be through a set **903**, **905** of HTTP based messages. The use case of FIG. **9** is a generic and can be implemented using any of a number of approaches, such as approaches **110**, **140**, or **200** shown in FIG. **1-2**.

Code **1010** of FIG. **10A** (Prior Art) shows a representation of the use case of FIG. **9** using a commonly modeling format (e.g., OMG's XML Metadata Interchange (XMI)). FIG. **10A** demonstrates a "closed world view" implemented by many conventional modeling tools. The assumption of code **1010** is that there is a root model element that contains everything needed for all SDLM artifacts. In code **1010**, links within a model are separate and distinct from links to external resources, which are links that use proprietary URL formats. Also, tools associated with code **1010** do not expect arbitrary extension data to be included in the artifact, which limits their extensibility. Instead, the tools at best discard or ignore extension data. At worse, extension data can render a related artifact unusable. Code **1010** is an XMI representation of a UML model, and an associated tool can only permit extensions if they use standard UML extension capabilities, which SDLM tools for the model may or may not completely support depending upon how strictly they conform to UML standards.

Code **1020** of FIG. **10B** and code **1030** of FIG. **10C** conform to standards of approach **200**, where every major concept is separated into its own resource type. So implementing the use case of FIG. **9** using concepts of approach **200** actors and processes are all individual resources, each having its own unique URL. Resources can be linked together using these URLs.

Code **1020** specifically represents the use case resource. It should be noted that links shown in code **1020** are relative links, which use whatever protocol and server/path that was used to retrieve the use case itself.

Code **1030** represents code for one of the actors referenced by the use case of FIG. **9**. Code **1030** demonstrates a use of XML namespaces to mix in content that is not part of the core

model, but that is defined by an external party (e.g., the creator, title, description, and data elements). Code **1030** also demonstrates a use of an absolute URL in referencing the stakeholder resource (of the use case of FIG. **9**) upon which the resource associated with code **1030** is logically based.

The present invention may be realized in hardware, software or a combination of hardware and software. The present invention may be realized in a centralized fashion in one computer system or in a distributed fashion where different elements are spread across several interconnected computer systems. Any kind of computer system or other apparatus adapted for a carrying out methods described herein is suited. A typical combination of hardware and software may be a general purpose computer system with a computer program that, when being loaded and executed, controls the computer system such that it carries out the methods described herein.

The present invention also may be embedded in a computer program product, which comprises all the features enabling the implementation of the methods described herein, and which when loaded in a computer system is able to carry out these methods. Computer program in the present context means any expression, in any language, code or notation, of a set of instructions intended to cause a system having an information processing capability to perform a particular function either directly or after either or both of the following: a) conversion to another language, code or notation; b) reproduction in a different material form.

What is claimed is:

1. A method for specifying IT assets comprising: storing and managing a set of Systems Development Life Cycle (SDLC) artifacts as a network of individual resources stored on a resource level in an internet space, each individual resource having a unique and addressable Uniform Resource Identifier (URI) associated with it, wherein each of the SDLC artifacts represents at least one of a physical and logical information technology asset, wherein each individual resource has at least one attribute other than the URI that specifies a value for the represented asset, wherein each of the individual resources utilizes a standardized markup language to specify asset details, wherein the individual resources are linked to one another using messages conforming to at least one standard network messaging protocol; and managing the SDLC artifacts through a repository server, comprising hardware and software, wherein communications to and from the repository server occur through a Representational State Transfer (REST) based Application Program Interface (API), wherein at least a portion of the SDLC artifacts are stored in the internet space within non-transitory storage devices remotely located from the repository server, wherein each SDLC artifact is a URI addressable object, wherein the repository server uses the URIs to reference the individual resources across the internet space regardless of the actual storage location of the individual resources, wherein the repository server maintains a set of indexes for the individual resources within a database, wherein URIs of the individual resources are used as unique keys within the database allowing the repository server to uniquely identify the individual resources, wherein the indexes permits queries directed to the set of SDLC artifacts to be effectively executed by the repository server responsive to requests from the messages received via the REST based API.
2. The method of claim **1**, further comprising: managing the set of SDLC artifacts using a set of stateless Representational State Transfer (REST) based commands.

11

3. The method of claim 1, further comprising: establishing a repository local to the repository server comprising a plurality of said individual resources, wherein within the repository each of the individual resources is stored in a data store at a granularity unit level of one of said individual resources.

4. The method of claim 1, wherein said communications to and from the repository server occurring through the REST API include communications based upon an HTTP GET command, upon an HTTP POST command, upon an HTTP PUT command, and upon an HTTP DELETE command.

5. The method of claim 1, wherein the repository server provides version control functions including check-in and check-out functions for the SDL artifacts managed by the repository server.

6. The method of claim 1, wherein said repository server comprises:

an audit component configured to provide traceability capabilities for the of the SDL artifacts managed by the repository server;

a report component configured to execute a set of SQL based reports of the SDL artifacts managed by the repository server; and

a search component configured to permit cross-repository text searches for the of the SDL artifacts managed by the repository server.

7. The method of claim 1, wherein the standardized markup language is an XML language, and wherein the standard network messaging protocol is a Hyper Text Transfer Protocol (HTTP).

8. The method of claim 1, wherein said step of claim 1 is performed by at least one machine in accordance with at least one computer program stored in a computer readable media, said computer programming having a plurality of code sections that are executable by the at least one machine.

9. A software artifact representing an information technology asset from which models are able to be built comprising:

a plurality of software artifacts stored on a resource level in an internet space, wherein said software artifacts together form a Software Development Lifecycle (SDLM) model, each of the plurality of software artifacts representing at least one of a physical and logical information technology asset, wherein each individual resource has at least one attribute other than the URI that specifies a value for the represented asset;

an addressable uniform resource identifier (URI) that is uniquely associated with said asset; and

at least one attribute used to specify a value for said represented asset, wherein said software artifact is able to be linked to other software artifacts having unique URI addresses using HTTP based links, wherein said software artifact is digitally encoded and stored in a non-transitory machine readable medium, wherein a repository server, comprising hardware and software, permits communications to and from the repository server occur through a Representational State Transfer (REST) based Application Program Interface (API), wherein at least a portion of the software artifacts are stored in the internet space within non-transitory storage devices remotely located from the repository server, wherein the repository server uses the URIs for the assets to reference the individual software artifacts across the internet space regardless of the actual storage location of the individual resources, wherein the repository server maintains a set of indexes for the individual resources within a database, wherein URIs of the individual resources are used as unique keys within the database allowing the repository server to uniquely identify the individual resources,

12

wherein the indexes permits queries directed to the set of SDLC artifacts to be effectively executed by the repository server responsive to requests from the messages received via the REST based API.

10. The software artifact of claim 9, wherein said SDLM model, which is able to be built from the software artifacts is a Unified Modeling Language (UML) model.

11. The software artifact of claim 9, wherein the software artifact is written in XML.

12. The software artifact of claim 9, wherein a set of Representational State Transfer (REST) based commands exist for utilizing and modifying said software artifact.

13. The software object of claim 9, wherein said software artifact is able to be retrieved, viewed, edited, deleted, and added to a software model constructed from a set of said software artifacts via a Representational State Transfer (REST) based interface using a set of REST based commands.

14. The software artifact of claim 9, wherein the software artifact is part of a repository local to the repository server comprising a network of individual resources each of which is one of said software artifacts, wherein said repository is managed by the repository server, wherein each of the individual resources is stored in a data store at a granularity unit level of one of the individual resources.

15. A repository server for managing a network of individual resources, each of which is associated with an IT asset comprising:

a data store storing a plurality of Systems Development Life Cycle (SDLC) artifacts as a network of individual resources stored on a resource level in an internet space, each SDLC artifact having a unique addressable Uniform Resource Identifier (URI) associated with it, wherein each of the SDLC artifacts represents at least one of a physical and logical information technology asset, wherein each individual resource has at least one attribute other than the URI that specifies a value for the represented asset, wherein each of the SDLC artifacts is configured to utilize a standardized markup language to specify asset details, wherein said SDLC artifacts are linked to one another using messages conforming to at least one standard network messaging protocol;

a repository server, comprising hardware and software, that managing the SDLC artifacts, wherein communications to and from the repository server occur through a Representational State Transfer (REST) based Application Program Interface (API), wherein at least a portion of the SDLC artifacts are stored in the internet space within non-transitory storage devices remotely located from the repository server, wherein each SDLC artifact is a URI addressable object, wherein the repository server uses the URIs to reference the individual resources across the internet space regardless of the actual storage location of the individual resources, wherein the repository server maintains a set of indexes for the individual resources within a database, wherein URIs of the individual resources are used as unique keys within the database allowing the repository server to uniquely identify the individual resources, wherein the indexes permits queries directed to the set of SDLC artifacts to be effectively executed by the repository server responsive to requests from the messages received via the REST based API; and

the Representational State Transfer (REST API) for submitting SDLC artifact related requests to the data store, wherein said REST API is able to receive and respond to

## 13

an HTTP GET command, an HTTP PUT command, an HTTP POST command, and an HTTP DELETE command.

16. The repository server of claim 15, further comprising: an index data store comprising the set of indexes related to said SDLC artifacts, which permit database queries to be executed against the SDLC artifacts, wherein when the HTTP GET command is received a corresponding SQL SELECT query is executed against entries of the data store of SDLC artifacts, wherein when the HTTP POST command is received a corresponding SQL INSERT command is executed that results in a new artifact being added to the data store of the SDLC artifacts and that results in an update of the indexes of the index data store, wherein when the HTTP PUT command is received a corresponding SQL UPDATE command is executed against entries of the data store of the SDLC artifacts and that results in an update of the indexes of the index data store, wherein when the HTTP DELETE command is received a corresponding SQL DELETE query is

## 14

executed against entries of the data store of the SDLC artifacts and that results in an set of indexes related to the deleted artifact being removed from the index data store.

17. The repository of claim 15, further comprising: an audit component configured to provide traceability capabilities for the SDLC artifacts; a report component configured to execute a set of SQL based reports involving the SDLC artifacts; and a search component configured to permit cross-repository text searches for the SDLC artifacts.

18. The repository of claim 17, wherein the standardized markup language is an XML language, and wherein the standard network messaging protocol is a Hyper Text Transfer Protocol (HTTP).

19. The repository of claim 16, wherein said SDLC artifacts are able to be linked together to form a plurality of Software Development Lifecycle (SDLM) models, where said SDLM models comprise at least one Unified Modeling Language (UML) model.

\* \* \* \* \*